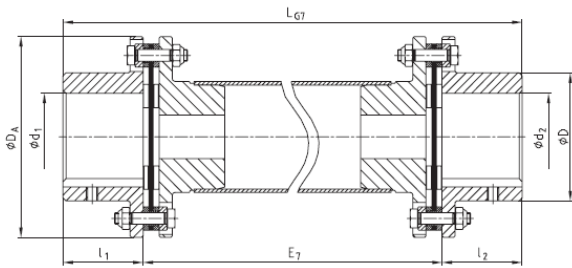


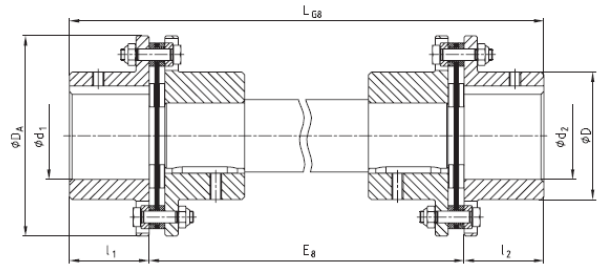
**Customized types**



- Types as per customer requirements
- Type NANA 4 for shaft distance dimensions up to 6 m (please note the critical whirling speed)
- Type NNW with solid shaft (please note the critical whirling speed)
- Finish bore according to ISO fit H7, feather keyway according to DIN 6885 sheet 1 - JS9
- $\text{Ex}$ -Approved and certified according to EC Standard 94/9/EC
- From size 136 screwing of laminas by means of clamping nut (see assembly instructions KTR-N 47112)



Type NANA 4



Type NNW

RADEX®-N Types NANA 4, NNZ and NNW								
Size	Max. finish bore		Dimensions [mm]					
	d <sub>1</sub> /d <sub>2</sub>	D	D <sub>A</sub>	l <sub>1</sub> /l <sub>2</sub>	LG7	E7	LG8	E8
20	20	32	56	20				
25	25	40	68	25				
35	35	54	82	40				
38	38	58	94	45				
42	42	68	104	45				
50	50	78	126	55				
60	60	88	138	55				
70	70	102	156	65				
80	80	117	179	75				
85	85	123	191	80				
90	90	132	210	80				
105	105	147	225	90				
115	115	163	265	100				
135	135	184	305	135				
136	135	180	300	135				
156	150	195	325	150				
166	165	225	350	165				
<b>NEW</b> 186	180	250	380	185				
206	200	275	420	200				
246	240	320	500	240				
286	280	383	567	280				
336	330	445	660	300				
138	135	180	300	135				
158	150	195	325	150				
168	165	225	350	165				
<b>NEW</b> 188	180	250	380	185				
208	200	275	420	200				
248	240	320	500	240				
288	280	383	567	280				
338	330	445	660	300				

LG7 = E7 + l1 + l2

Intermediate shaft dimension according to customer specification

LG8 = E8 + l1 + l2

Intermediate shaft dimension according to customer specification

Ordering example:	RADEX®-N 60	NANA 4	Ø50	Ø60	2500
	Coupling size	Type	Finish bore d <sub>1</sub>	Finish bore d <sub>2</sub>	Shaft distance dimension